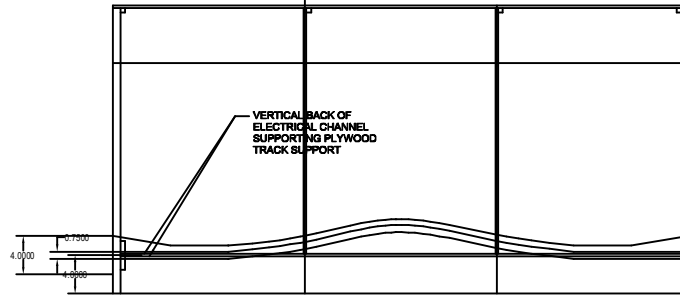
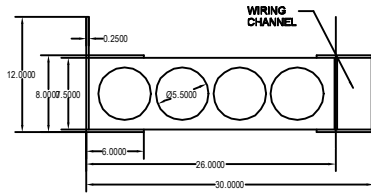


**BILL OF MATERIAL FOR STRAIGHT SECTION**

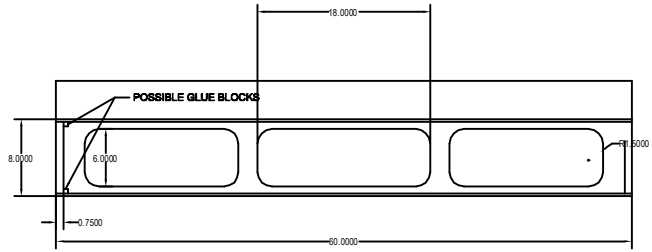
- 2 PCS 7.5" X 23.5" 3/4" BAL TIC BIRCH PLYWOOD
- 1 PC 12" X 80" 1/4" BAL TIC BIRCH PLYWOOD
- 1 PC 7.5" X 80" BAL TIC BIRCH PLYWOOD
- 3 PCS 6" X 80" 1/4" BAL TIC BIRCH PLYWOOD
- 1 PC 80" X TBD 1/4" BAL TIC BIRCH PLYWOOD
- 1 PC 6" X 80" 1/8 OR 1/4" TEMPERED MASONITE FRONT FASCIA
- GLUE BLOCKS AT ALL CRITICAL JOINTS



**CLUB MODULAR LAYOUT 01-07-10**



**TYPICAL CROSS SECTION ALL MODULES**

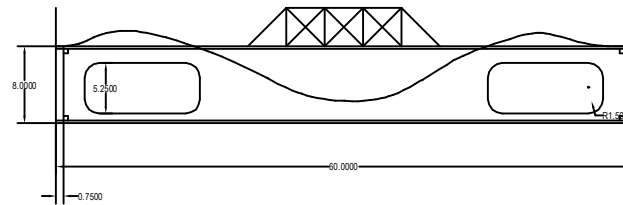


**TYPICAL STRAIGHT MODULE SIX PLACES**

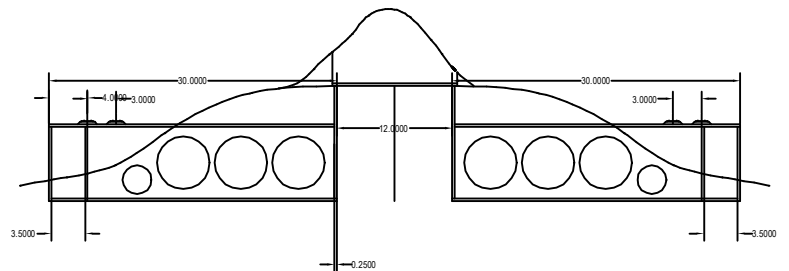
**STANDARDS FOR DISCUSSION**

- 28 INCH MINIMUM RADIUS MAINLINE
- 48" TRACK HEIGHT
- DEFINE CONNECTION FOR MEMBERS MODULES
- 1/4" THICK CALIFORNIA ROADBED HOMOSOTE FOR TRACK BASE
- GLUED TO PLYWOOD
- WEIGHT OF 72" AND 80" MODULES

**CLUB MODULAR LAYOUT 01-07-10**



**TYPICAL MODULE WITH BRIDGE AND GULLY**



**CLUB MODULAR LAYOUT 01-07-10**